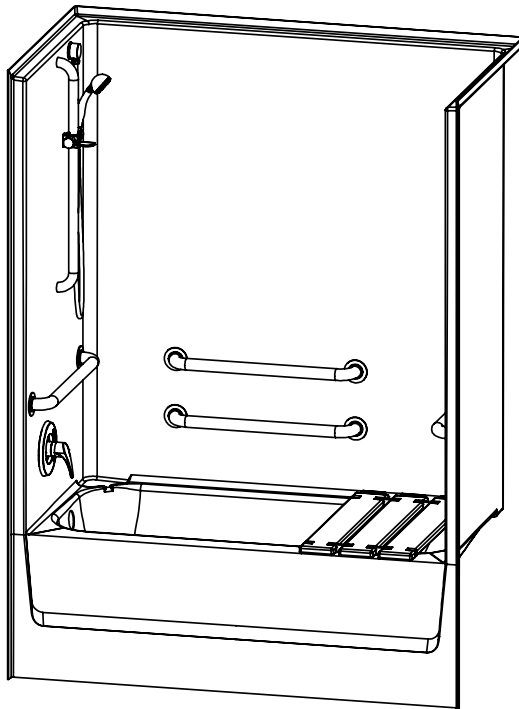


# 2603SMTH – ACCESSIBLE TUB-SHOWERS

inches

Interior: 56 x 30 ¼ x 80

Exterior: 60 x 33 ¼ x 81 ¼



## FEATURES

- AcrylX™ applied acrylic surface
- 19" skirt
- Above floor rough
- Smooth wall
- LH or RH drain
- Partial reinforcement to accommodate standard grab bar locations. Additional reinforcement available.
- Lifetime limited warranty (30 year commercial)

## OPTIONS

- Grab bars
- Removable seat
- Hand-held shower assembly with slide bar
- Pressure balancing mixing valve
- Curtain rod and/or shower curtain

## CODE COMPLIANCE

- IAPMO Z124-2011
- CSA-B45-11

\*\*Code compliant when fully equipped and installed according to guidelines.

## AQUATIC ADVANTAGE

- National distribution
- 7 manufacturing facilities
- Private fleet
- Centralized customer service
- Field support

## COLOR & TRIM OPTIONS

Stock	Upgraded
White	Almond Biscuit Bone

\*\*Additional custom colors available.  
(Contact Customer Service)



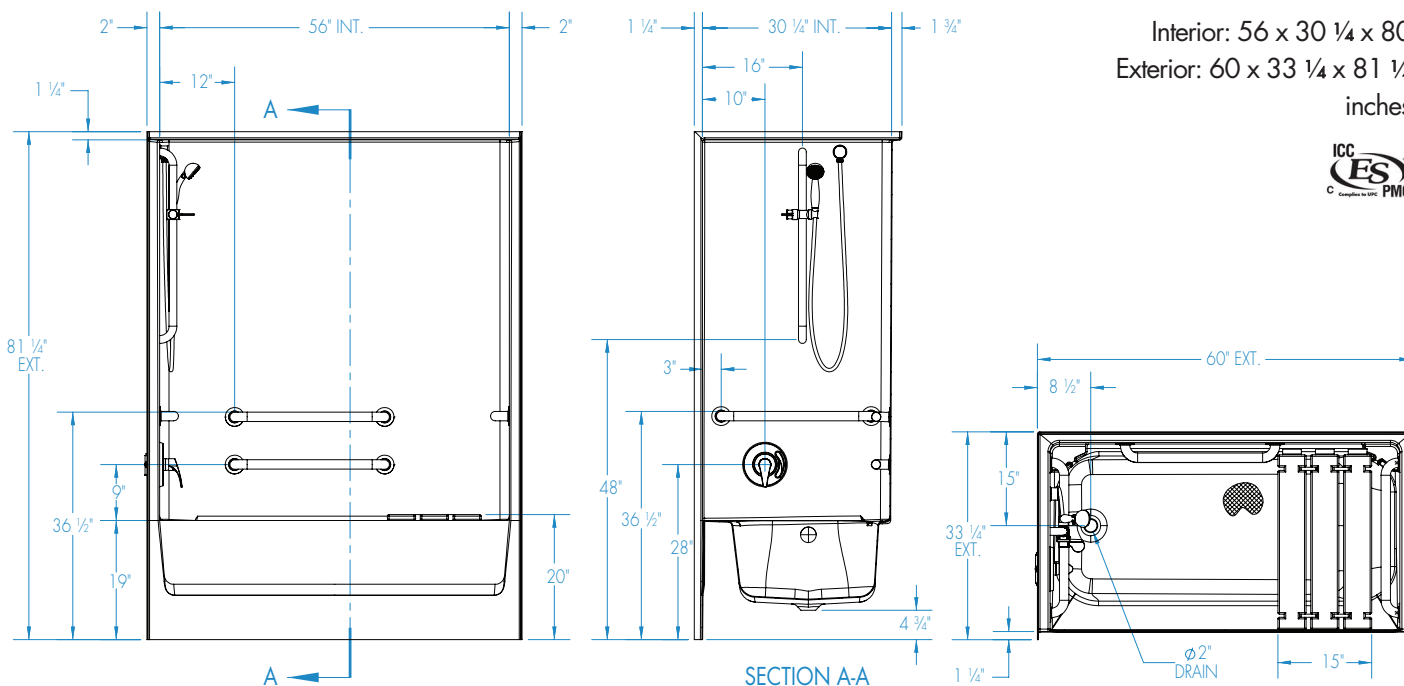
Aquatic products may be specified as Lasco Bathware.



Aquatic products may be specified as Lasco Bathware.

# 2603SMTH

Interior: 56 x 30 1/4 x 80  
Exterior: 60 x 33 1/4 x 81 1/4 inches



## FEATURES

Dimensional Tolerance  $\pm 3/8"$ . Dimensions needed for site preparation should be measured from the unit. Aquatic assumes no responsibility for preparatory work.

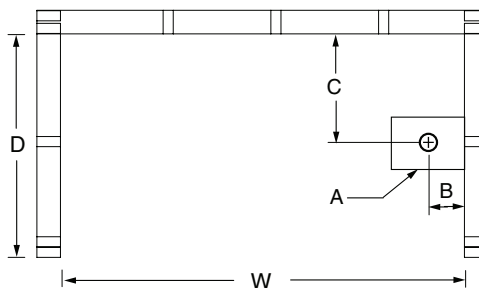
Type and Model #	Material	Wall Finish	Pieces	Drain	Skirt Height	Net Wt. lbs	Pkg. Wt. lbs
Tub-shower #2603SMTH	AcrylX™	Smooth	1	LH/RH	19" skirt	181	191

## DIMENSIONS

Specifications	inches
Width: Overall / Net	60 / 56
Depth: Overall / Net	33 1/4 / 32
Height: Overall / Net	81 1/4 / 80
Enclosure Opening:	56
Skirt Height:	19
Drain Rough-In (from Back Wall)	8 1/2
Drain Rough-In (from Side Wall)	15
Drain: Diameter / Clearance	2 / 4 3/4

## FRAMING DIMENSIONS inches

Type	D Depth	W Width	H Height	A	B	C
Alcove	33 1/4	60 1/8	-	6 x 12 (150 x 305)	1 1/2 (40)	15



## SUMP DATA

Top of Drain to Bottom of Overflow	Capacity to Overflow gal (ltr)	WIDTH @ centerline		DEPTH @ centerline	
		Top	Bottom	Top	Bottom
12	38	23 1/4	21 1/4	53 3/4	45 1/4